

**Holland,  
Groves and  
Scheller, LLC**



**St. Louis, Missouri  
2005**

**PROJECT OVERVIEW**

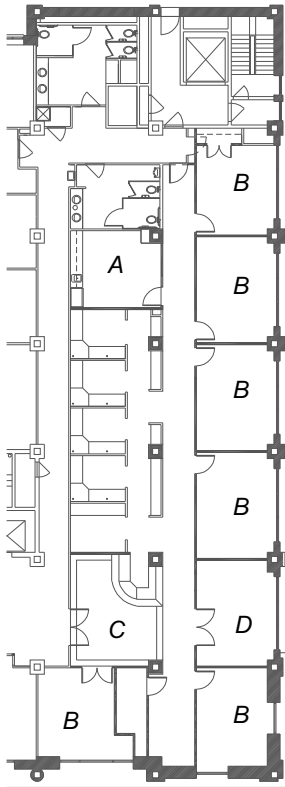
Law firm, Holland, Groves and Schneller relocates to the top floor of the old Post Dispatch building to new offices designed by St. Louis Design Alliance. Awarded first place in the small business category of the Business Journal's "Best Places to Work in 2005," this suite is a prime example of redirected use of space. It offers a dramatic lobby and conference room that lead to spacious, light-filled offices beyond.



office



reception area



**FLOOR PLAN KEY**

- A lunch room
- B office
- C reception area
- D conference room



conference room



reception area



lunch room