

**St. Louis
Metro Baptist
Association**



**Bridgeton, Missouri
2006**

PROJECT OVERVIEW

Arts and Crafts details abound in a new building designed by architect, St. Louis Design Alliance for the St. Louis Metro Baptist Association offices. Their move from cramped quarters to an 8,000 square foot building allows for more office space, conference rooms, and a media center.



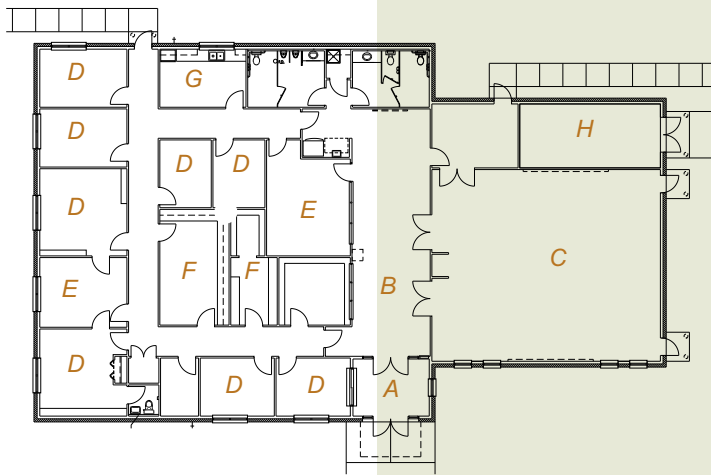
east view



main entrance



meeting room



FLOOR PLAN KEY

- A vestibule
- B foyer
- C meeting room
- D office
- E conference room
- F media
- G kitchen

non-for-profit

saint louis

DESIGN ALLIANCE

architects