

Rockwood Court Apartments



**Webster Groves, MO
2006**

PROJECT OVERVIEW

A 1928 Tudor Revival apartment building retained much of its original detail in this historical conversion project by St. Louis Design Alliance and St. Andrews' Management Company. A dining room, commercial kitchen, lobby and a meeting room was added to the rear of the building, blending with the existing exterior. The basement garage was also updated to include an exercise room and more storage.



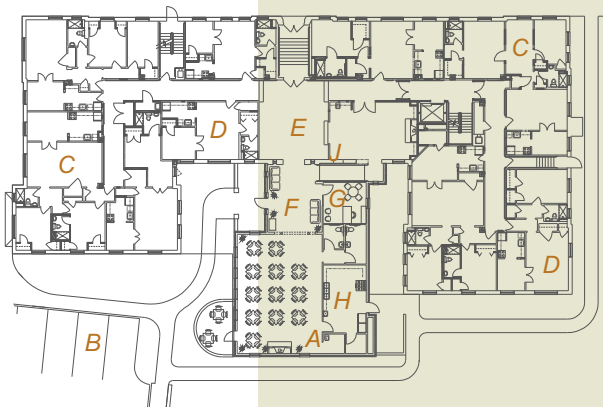
living room



new addition



tea room



SITE PLAN

- | | | | |
|---|----------------|---|-----------|
| A | tea room | F | lobby |
| B | parking | G | office |
| C | 2 bedroom unit | H | kitchen |
| D | 1 bedroom unit | J | club room |
| E | grand lobby | | |