

Morningstar Senior Residences



Moline, IL
2010

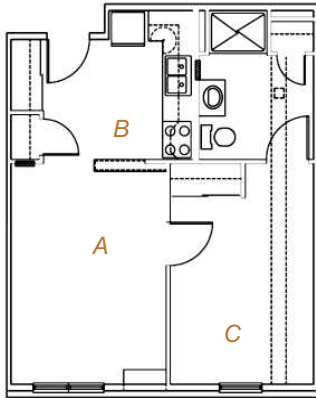
PROJECT OVERVIEW

STLDA offers seniors low income independent living in this three story, 60 units HUD community. From the courtyard, residents have a beautiful view of the river nearby. A multipurpose room and kitchen provide additional public space. The exterior brick and siding create a pleasant architectural rhythm.



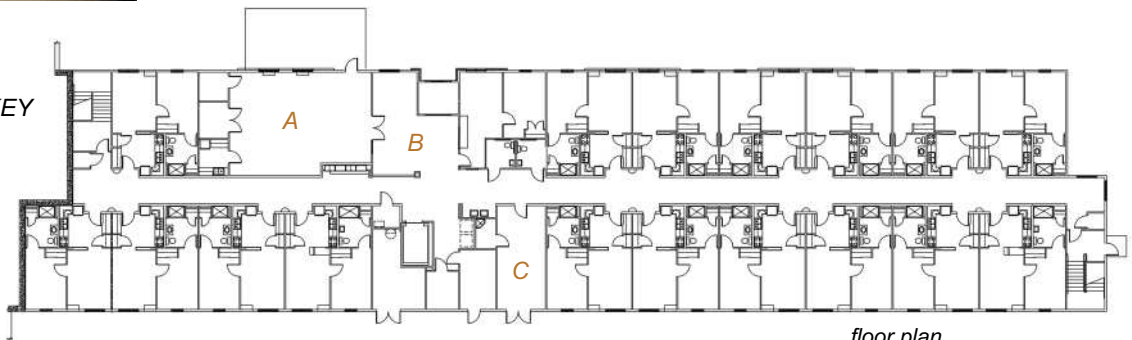
UNIT PLAN

- A dining/living room
- B kitchen
- C bedroom



FIRST FLOOR PLAN KEY

- A multi-purpose
- B foyer
- C mechanical



floor plan